



Special Matters
Staffordshire
Moorlands

Newsletter January 12
Support Group for Parents



Stanley Head
Blue Plant

And More:

Happy New Year to you all!

Hope you all had a great Christmas and New Year. Welcome to the latest newsletter. We have had great time over Christmas period with Alton Towers Santa Lunch and a trip to the New Vic theatre to watch Alice in Wonderland. Also next month we have invited a Dietitian to our support group, please take a look when and where. We are pleased that a Dietitian has offered to attend so please come along and join us!

Please contact me if you would like to add anything into the next newsletter which will be out in April/May time. For my information please contact me on 07966 053040 or email faith.asplin@staffordshire.gov.uk. Remember to look at the website www.specialmatters.co.uk

Faith

Context

Page 2 - Stanley Head

Page 3 - Blue Plant

Page 4/5 - Support Groups

Page 6 - Dates for your Dairy

Stanley Head

Enjoy some time in the fresh air of the Staffordshire Moorlands in the Spring! Special Matters with funding from Aiming High is delighted to offer a day and night away at Stanley Head. Stanley Head has a wide range of outdoor activities and an experienced team of staff to offer support to your family.



A number of activities will be on offer including Archery, Abseiling, raft building evening camp fires and much more...

Arriving on Friday lunchtime you will be able to enjoy an activity in the afternoon followed by evening meal and accommodation. A second opportunity to take part in an activity will be offered on Saturday morning followed by lunch. Accommodation will be offered in a variety of dormitories or tents.



If you are interested in this event please take a look at the website. www.stanleyhead.org.uk

Please contact the office to register your interest in this activity by Friday 10th Feb; you will be contacted to confirm places before March 9th. Please contact office (number below) for more information.

13th & 14th April 2012



For more details call:

Leek and Rural Children's Centre 01298 687162 or

email: specialmatters@staffordshire.gov.uk

BLUE PLANT

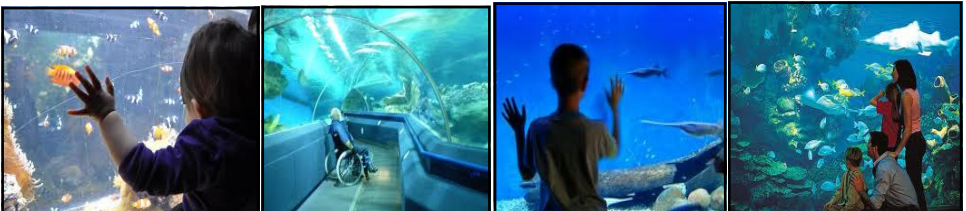


We are taking a trip to the Blue Planet Aquarium. Blue Planet is situated in Cheshire and they have a number of sea life exhibitions. Blue planet Aquarium is home to over 15 different species of sharks including Sand Tiger Sharks. The Sand Tiger Sharks are over 10 foot in length and have an impressive display of over 250 teeth. They also have Black and White Tip Reef Sharks, Bamboo Sharks, Port Jackson Sharks, Zebra Sharks and the weird and wonderful Wobbegong Shark as

well as giant Southern Sting Rays, Jacks, Moray Eels and hundreds of brightly coloured reef fish. Also they have rock pools where you can touch the fish gently. At the heart of the aquarium is Aquatunnel, one of the longest underwater tunnels in the world at 70 m long. You'll be taken on a spectacular underwater safari by moving walkway and everywhere you look you'll find amazing tropical fish and awesome sharks staring back at you! If you would like to look at the website for more info www.blueplantaquarium.com.

We are providing a Coach leaving from Leek High School. Please phone the office to book your place, when you phone please can you mention that you would like a coach place, and if you need a wheelchair place. We will confirm that you have a place by letter. Please bring a packed lunch with you as there will be a cafe there where you can order food. Please phone before the 17th February. Donation off £4.00 for Adults and £2.00 child.

Saturday
3rd March 2012
Leaving Leek High at 10.00am



SUPPORT GROUPS IN LEEK & CHEADLE

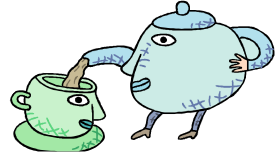
The next Support Groups are as below. Please come along to have a cuppa and chat with other parents. We have some books which are available to borrow. We always have information about activities and workshops at the Drop In and the atmosphere is very friendly. If you are a parent who would like to bring a friend along who also has a child with special needs please do – all are very welcome. We have a Dietitian visiting our group on 22nd February, please join us and take this opportunity to chat and ask questions.

**Leek Support Group at the
Springfield Special School
22nd February 2012
21st March 2012
Starting at 10.00am - noon**

**Cheadle Support Group at the
Cheadle Children Centre
6th February 2012
5th March 2012
Starting at 7.30pm - 9.30pm**



SMILE



Parent - Carers
Together

Support Group
For Parents and Carers of
children with additional needs
Thursday 2nd February 2012
Thursday 1st March 2012
(first Thursday of each month)
10 - 11.30am

@ The Staffordshire Moorlands Children's Centre in Biddulph
and supported by North Staffs Carers Association

**Come along for advise, support....meet other
carers.. chill and chat**

For more details

Call the Children's Centre to speak to a member
of the Family Activities Team on 01782 297970

Or Alternatively call Lisa Leese at

The North Staffs Carers Association on 01782 831624



Dates for your Diary

Support Groups

We are having the support groups in Leek and Cheadle. Cheadle in the Cheadle Children Centre, meeting at 7.30pm, Leek is a daytime one at the Springfields Special School starting 10.00am. Please come and join us, it would be great to see you there to have a cuppa and a chat.

[Cheadle - Children Centre](#) [Leek - Springfield's Special School](#)

9th January 2012

18th January 2012

6th February 2012

22nd February 2012

5th March 2012

21st March 2012

Activity Days/Meeting

3rd March - Blue Plant

14-15th April - Stanley Head

Contact Information

Faith Asplin: 07966 053040
Jenny Hurst: 07815 999079
Office: 01298 687162

Office address:

Special Matters
Leek & Rural Children's Centre
c/o Manifold Primary School
Leek Road
Warslow
Nr Buxton
Derbyshire
SK17 0JR

E-mail - faith.asplin@staffordshire.gov.uk
Or special.matters@staffordshire.gov..uk
Website - www.specialmatters.co.uk



Special Matters
Staffordshire
Moorlands

Leek and Rural Children's Centre
A Sure Start Children's Centre

