



Special Matters  
Staffordshire  
Moorlands

**Newsletter October 11**  
**Support Group for Parents**

# Come and Meet Santa Alice in Wonderland



**And More:**

Welcome to the latest newsletter!!!

We have had another very busy holiday time over the summer. Aiming High has funded some of the activities which has been great, we also have some more funding from Aiming High over the next six months. So please have a look out for these activities. Our Support Group in Leek has been changed from the Meadow Special School to Springfield's Special School, these are back on a Wednesday Morning. We have some exciting people coming along to talk to you parents at the support group. So watch out for who is coming along.

Please contact me if you would like to add anything into the next newsletter which will be out in December. For my information please contact me on 07966 053040 or email [faith.asplin@staffordshire.gov.uk](mailto:faith.asplin@staffordshire.gov.uk). Remember to look at the website [www.specialmatters.co.uk](http://www.specialmatters.co.uk)

*Faith*

## **Context**

**Page 2 - Santa Lunch**

**Page 3 - New Vic Theatre**

**Page 4 - Summer Activities/feedback**

**Page 5/6 - Support Groups**

**Page 7 - Tilly Smile**

**Page 8 - Dimensions/Sensory Room & G8way**

**Page 9 - Touching Sound Limited**

**Page 10 - Dates for your Dairy**

# SANTA LUNCH

The last two years we have taken a number of families up to Alton Tower to meet Santa and have a Christmas Lunch. This is a very popularly activity, the families who have been before have had a wonderful time and really enjoyed themselves. We are having another activity to meet Santa. On this day you can do the following:



- Christmas Lunch
  - Meet Santa in his secret hide away grotto
    - Meet Santa's Reindeers
- Also an entrance to Splash Landings (if you would like to)
  - Puppet show
- Watch a Christmas Movie in their cosy festive Cinema
  - Some of the rides will be open in the children area

Please can you contact the office by the 28th October to book your place. Due to the anticipated demand for places family names will be drawn out of the hat after this date and you will receive a confirmation letter by 18th November if you have a place. Also when phoning please let us know any special dietary requirement and names and date of birth for all of the children.



**27th November 2011**  
**12.00pm - 4.00pm**

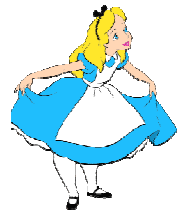
# NEW VIC THEATRE

## Alice in the Wonderland

We have another adventure trip to the New Vic theatre to see Alice in Wonderland, to see Alice taking her journey though strange and enchanted new world. Meet the Rabbits, take tea with the Mad Hatter, search for the Chester Cat Hide from a very bad-tempered Queen. . . With this whimsical wonderland it just gets curiouser and curiouser! This will be another magical time for your children.



Please phone the office by the 2nd December, family names will be drawn out of a hat after this date and you will receive a confirmation letter by the 16th December if your family has a place. When phoning please let us know whether you need a disabled parking space and a wheelchair space in the theatre. A donation of £4.00 for adult and £2 for a child to be paid in advance, children under 3 will go free.



**Saturday 14th January 2012**  
**2.15pm**

# SUMMER ACTIVITIES

Over the summer time we had a number of activities. These activities were very well attended and families had at a great time. Here are some comment from some of the families:

## DJ Workshop

### Camelot

We all had a brill time  
'Thank You'

Thank you for a varied afternoon  
we both enjoyed ourselves and I  
was able to access more info

Excellent,  
Thank you  
a really  
enjoyable  
day out.

It's really helpful that I could take my son  
somewhere that he is safe & staff understand  
his needs which is local instead of having to  
travel too far. It gave me a break knowing  
that my son would be ok to so other things  
that I could otherwise not have done.

## Twycross Zoo

### Play scheme

Met and exchanged  
contact details with  
another Mum who has  
similar experiences and  
will meet up & talk on  
the phone to support  
one another.

Absolutely  
fantastic, loved  
the day out

Thank you so  
much for a fantastic  
family day out much needed  
& appreciated.

# SUPPORT GROUPS IN LEEK & CHEADLE

We have moved our Special Matters, drop in to Springfield's Special School it is back on Wednesday. The next one is on Wednesday 19th October starting at 10.00am. The support group in Leek on the 16th November, we have Ruth Zimmerman coming along to have a chat. Please come along to have a cuppa and chat with other parents. We have some books which are available to borrow. We always have information about activities and workshops at the Drop In and the atmosphere is very friendly. If you are a parent who would like to bring a friend along who also has a child with special needs please do – all are very welcome.

## **Leek Support Group at the Springfield Special School**

**19th October**

**16th November**

**14th December**

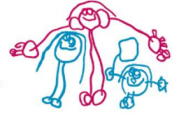
**Starting at 10.00am - noon**

## **Cheadle Support Group at the Cheadle Children Centre**

**14th November**

**12th December**

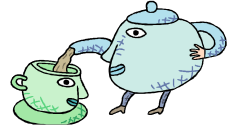
**Starting at 7.30pm - 9.30pm**



SMILE



Parent - Carers  
Together



Support Group  
For Parents and Carers of  
children with additional needs

**Thursday 3rd November 2011**

**Thursday 1st December 2011**

**(first Thursday of each month)**

**10.00am - 11.30am**

**@ The Staffordshire Moorlands Children's Centre in  
Biddulph and supported by North Staffs Carers  
Association Come along for advise, support....meet other  
carers.. chill and chat**

For more details

Call the Children's Centre to speak to a member  
of the Family Activities Team on 01782 297970

Or Alternatively call Julie Roberts at  
The North Staffs Carers Association on  
01782 831624



the knot unites



# TILLY SMILES

Tilly Smiles first began with Tilly, aged five, in St Edwards' First School Nursery Class with her teacher Mrs Kath Walker as part of a Family Learning session. Together they produced a little booklet and showed it to The Jennifer Trust for Spinal Muscular Atrophy ([www.jtsma.org.uk](http://www.jtsma.org.uk)) who were delighted with the work and decided to fund the publication of a book that they could give to families newly diagnosed with SMA to provide inspiration and information.



Over the years, Tilly developed and created the content and then teamed up with the Caudwell Children Design Team who transformed Tilly's work into a lively, bright and colourful hardback book, filled with verses and photographs, which on sale for £10 in Picture Book in Leek, or online from the above web-site. All proceeds will go straight to the Jennifer Trust for Spinal Muscular Atrophy.

As the project developed, it became clear that there were very few 'child-friendly' books available to show just what can be achieved when living with disability, when just the right help and appropriate support is put in place. Tilly hopes that her book will one day be in lots of suitable settings such as classrooms, Churches and waiting rooms and will deliver a strong, positive message to all who get to read it, that disability need not get in the way of a busy, happy childhood.

# DIMENSIONS/SENSORY ROOM

Dimensions in Burslem has a sensory room you can hire out. From a transparent fibre optic waterfall to a musical floor and much more, it's a magical place packed full of fun to amaze and delight your child. The purpose



designed to engage young children with special needs, sensory room helps them learn and relax through interactive play. It creates a stimulating environment for children through use of multi sensory objects, light and sounds. Each session in the sensory room, cost £4.85, energise plus £3.85.

You can hire the room privately, please phone for details, 01782 233500

- \* Lights of every colour
- \*Wacky & Wonderful
- \*Interactive hi tech soft play

## G8Way

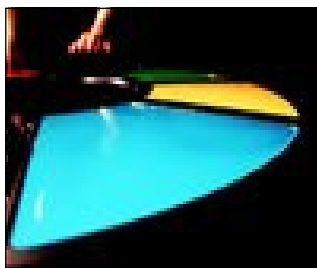
G8way is run by Aiming High working with Disabled Children and Young People in the Staffordshire area. This project is aimed at helping disabled children and young people to make choices by supporting access to activities with in the community. This means you will have someone to come around and talk to your child/children about what their interests are and this worker will see if they can find an activity for your child. This will involve working with service providers, voluntary and community organisations and parent groups. G8way also organise some local events for the families.

Newcastle/Moorlands 07772 066955 / 07772 066966  
g8way-newmoorlands@staffordshire.gov.u

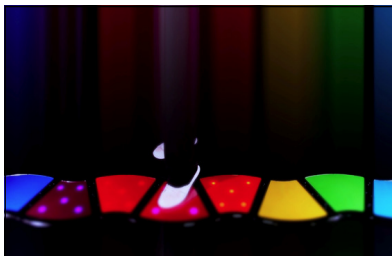
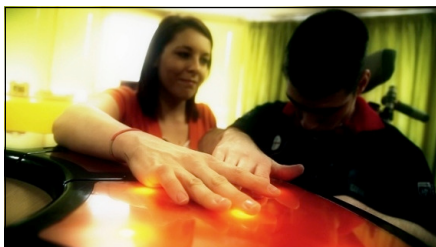
Website: [www.staffordshire.gov.uk/disabledchildren](http://www.staffordshire.gov.uk/disabledchildren)

# TOUCHING SOUNDS LTD

Touching Sounds Ltd deliver bespoke workshops, which utilise our own interactive musical instrument called 'Khoros', designed for children, young people and young adults with any level of musical experience, learning ability or physical ability. During workshops users can explore sounds and music from the predefined sound & music library, record and trigger their own sounds and voices using a microphone and record everything they create. Users can even record and trigger projected video clips to create and control their own multi sensory environment. Workshops are tailored to focus on the needs of each user building on communication skills, co-ordination skills, self esteem, cause and effect and basic to advanced music skills to name a few, all while having fun!



If you would like to know more please have a look at these video clips at: [vimeo.com/khorosmusic/khoros](https://vimeo.com/khorosmusic/khoros) and this one is from Acorns Children Hospice where was a workshop, [vimeo.com/22264153](https://vimeo.com/22264153). If you have any questions please contact Paul Rogerson on Tel: 07779792424 or email on: [info@khoros.co.uk](mailto:info@khoros.co.uk).



# Dates for your Diary

## Support Groups

We are having the support groups in Leek and Cheadle. Cheadle in the Cheadle Children Centre, meeting at 7.30pm, Leek is a daytime one at the Springfields Special School starting 10.00am. Please come and join us, it would be great to see you there to have a cuppa and a chat.

[Cheadle - Children Centre](#) [Leek - Springfield's Special School](#)

14th November

12th December

19th October

16th November

14th December

## Activity Days/Meeting

27th November - Alton Towers Santa Lunch

14th January - New Vic theatre Alice in Wonderland

## Contact Information

Faith Asplin: 07966 053040  
Jenny Hurst: 07815 999079  
Office: 01298 687162

Office address:

**Special Matters  
Leek & Rural Children's Centre  
c/o Manifold Primary School  
Leek Road  
Warslow  
Nr Buxton  
Derbyshire  
SK17 0JR**

E-mail - [faith.asplin@staffordshire.gov.uk](mailto:faith.asplin@staffordshire.gov.uk)  
Or [special.matters@stafforshire.co.uk](mailto:special.matters@stafforshire.co.uk)  
Website - [www.specialmatters.co.uk](http://www.specialmatters.co.uk)



Special Matters  
Staffordshire  
Moorlands

**Leek and Rural Children's Centre**  
**A Sure Start Children's Centre**



Staffordshire  
County Council